



EXISTING CONDITION



DAY 1 WITHOUT MITIGATION

NOTE:
This drawing provides the aesthetic impression of the indicative form, size and quality of the architectural and landscaping treatment for the railway structures. The final details of layout, materials and finishes will be subject to detailed development.

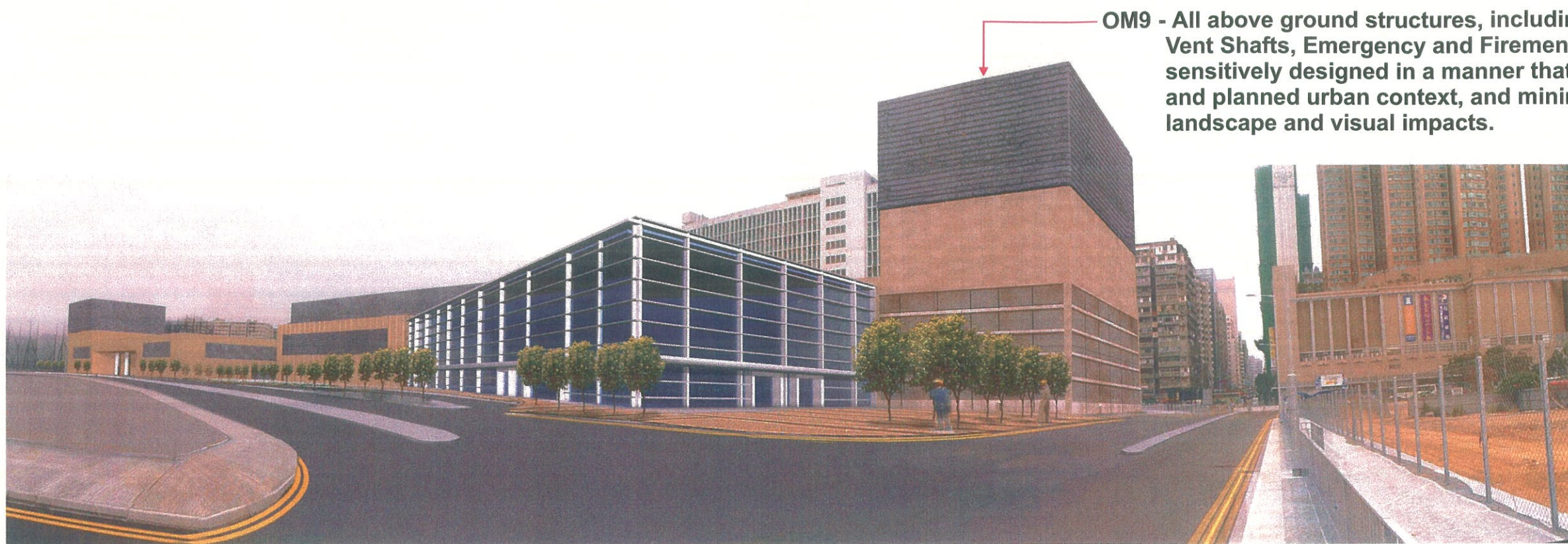
REV	DATE	BY	SUB	APP	DESCRIPTION

DESIGNED BY
P. SNAITH
DRAWN BY
AAZ
CHECKED BY
A. DUGGIE
IN CHARGE
A. DUGGIE
DATE
JUNE 2004


New Railway Projects
 新鐵路策劃
 Ove Arup & Partners Hong Kong Limited **ARUP**

KOWLOON SOUTHERN LINK KSL GSA-5100
 EIA & ASSOCIATED SERVICES
PHOTOMONTAGE - PM3
 (SHEET 1 OF 2) WKN STATION
 FROM PROPOSED ROAD D1

©ADD FILENAME	CADD DATE
SCALE	
DRAWING NUMBER Figure 11-5-36	
SHEET NO	STAGE CODE REV A

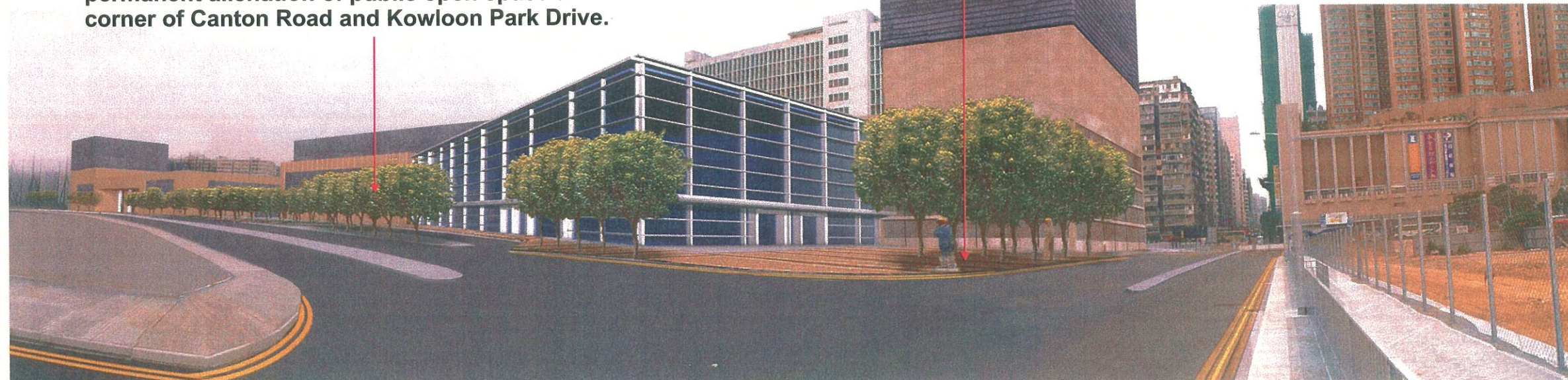


OM9 - All above ground structures, including Station Entrances, Vent Shafts, Emergency and Firemen's Accesses etc shall be sensitively designed in a manner that responds to the existing and planned urban context, and minimises potential adverse landscape and visual impacts.

INDICATIVE LIST OF FINISHES:
 Reconstituted stone cladding system (or similar) combined with aluminium louvres, frit laminated glazing and stainless steel.

DAY 1 WITH MITIGATION

OM13 - Creation of attractive public streetscape area in front of West Kowloon Station with shade trees in paving, as partial mitigation for the permanent alienation of public open space at corner of Canton Road and Kowloon Park Drive.



OM8 - Attractive streetscape design shall be incorporated at all station entrances areas and above ground structures, including the provision of tree planting where space permits. All streetscape areas and hard and soft landscape areas disturbed during construction shall be reinstated to equal or better quality, to the satisfaction of the relevant Government departments.

NOTE:
 This drawing provides the aesthetic impression of the indicative form, size and quality of the architectural and landscaping treatment for the railway structures. The final details of layout, materials and finishes will be subject to detailed development.

YEAR 10 WITH MITIGATION

REV	DATE	BY	SUB	APP	DESCRIPTION

DESIGNED BY
N. HENDRY
 DRAWN BY
AAA
 CHECKED BY
A. DUGGIE
 IN CHARGE
A. DUGGIE
 DATE
JUNE 2004

New Railway Projects
 新鐵路策劃

Ove Arup & Partners Hong Kong Limited **ARUP**

KOWLOON SOUTHERN LINK KSL GSA-5100
 EIA & ASSOCIATED SERVICES
PHOTOMONTAGE - PM3
(SHEET 2 OF 2) WKN STATION
FROM PROPOSED ROAD D1

CADD FILENAME	CADD DATE
SCALE	
DRAWING NUMBER Figure 11-5-37	
SHEET NO	STAGE CODE REV
	A